

Create A New Connection In Excel

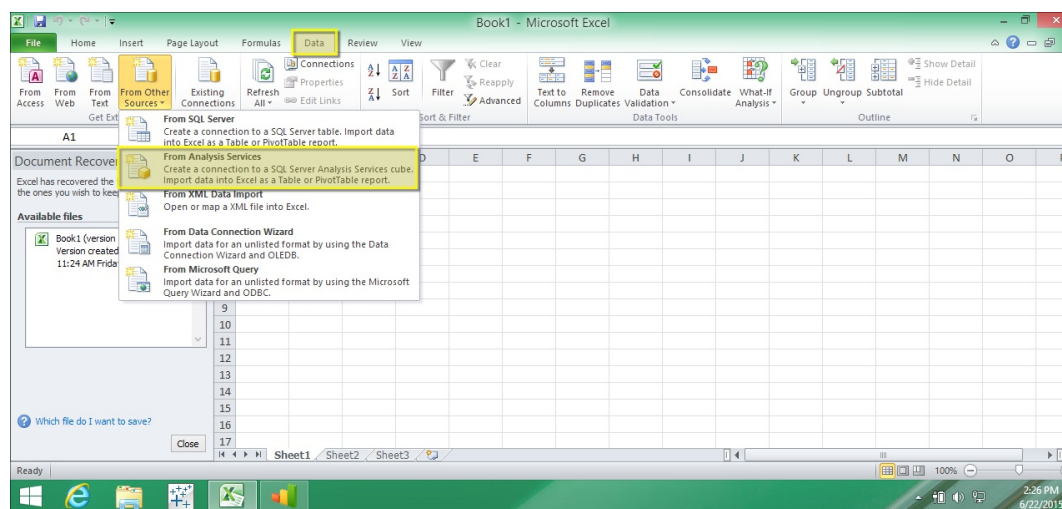
You connect to AtScale from Excel as though you are connecting to a Microsoft SQL Server Analysis Services (MSSAS) model. Once you have connected to an AtScale model, you can build a PivotTable report from fields in the model.

Before You Begin

- ▲ If you are using Windows Authentication, you should have either Kerberos or NTLM enabled. For more information, see [Connecting to Active Directory via NTLM Pass-Through \(Netlogon\)](#) and [Configuring Kerberos](#).
- ▲ Ensure that the `xmla.auth.token.enabled` engine setting is enabled.
- ▲ Optionally, you can enable Xpress compression to improve the communication. To do this, you can turn on the `soap.xpress.enabled` engine setting. For more information, see [Changing Engine Settings](#).

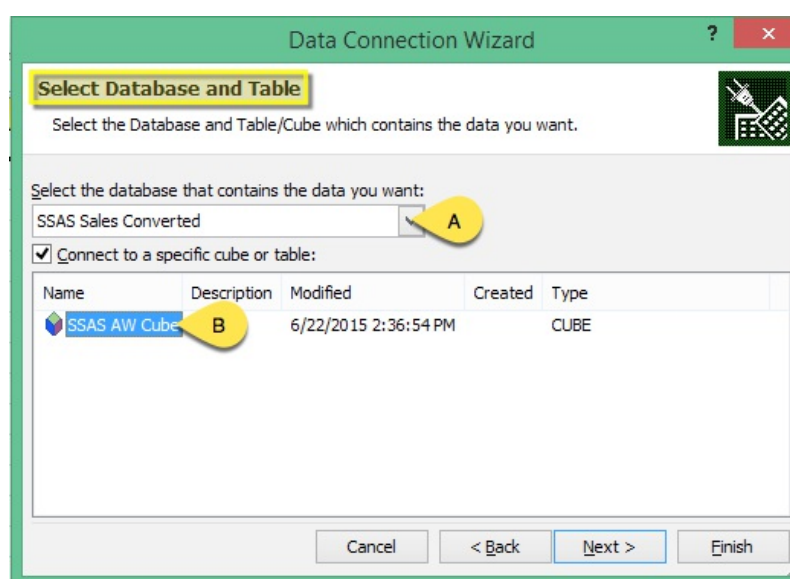
Procedure

1. In Design Center:
 1. Click the profile icon in the top right corner of Design Center. The **Account** panel opens.
 2. Click **Generate XMLA** token.
 3. Open the **Deployed Catalogs** panel, then open the catalog you want to connect to.
 4. On the **Connect** tab, copy the **MDX + Token** connection string.
2. In Excel, open a blank worksheet.
3. On the **Data** tab, select **Get Data > From Other Sources > From Analysis Services**.



4. In the **Connect to Database Server** dialog, complete the following fields, then click **Next**.

- ▲ **Server name:** Enter the MDX connection string you copied above.
 - ▲ **Login credentials:**
 - ▲ If AtScale is configured to use Windows Authentication, select **Use Windows Authentication**. Note that Microsoft NT LAN Manager (NTLM) v2 is required for this method of authentication.
 - ▲ If AtScale is not configured to use Windows Authentication, select **Use the following User Name and Password** and enter your AtScale username and password.
5. In the **Select Database and Table** dialog, select the catalog as the database, then select the specific model you want to connect to. Click **Next**.



6. In the **Save Data Connection File and Finish** dialog, select **Save password in file**. Optionally, you can enter a **Description** and **Friendly Name** for the AtScale model you are connecting to. Click **Finish**.



Note: When connecting to **Excel 2010**, you must select **Save password in file** or you will be unable to establish a connection to your AtScale model.

7. In the **Import Data** dialog, select either **PivotTable Report** or **PivotChart and PivotTable Report**, then click **OK**.

What To Do Next

You can create your PivotTable report by selecting fields from the model.

