

Create A New Connection In Excel

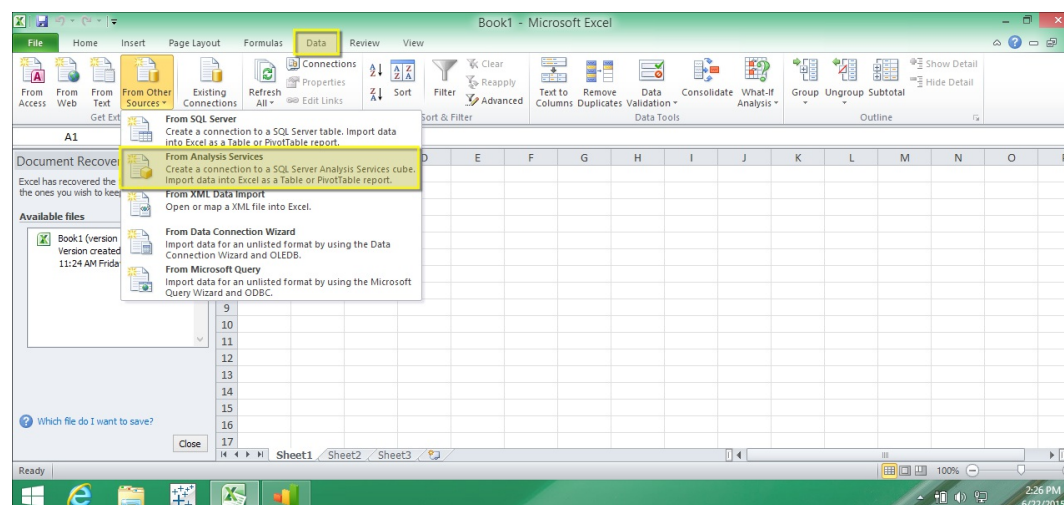
You connect to AtScale from Excel as though you are connecting to a Microsoft SQL Server Analysis Services (MSSAS) cube. Once you have connected to an AtScale cube, you can build a PivotTable report from fields in the cube.

Before You Begin

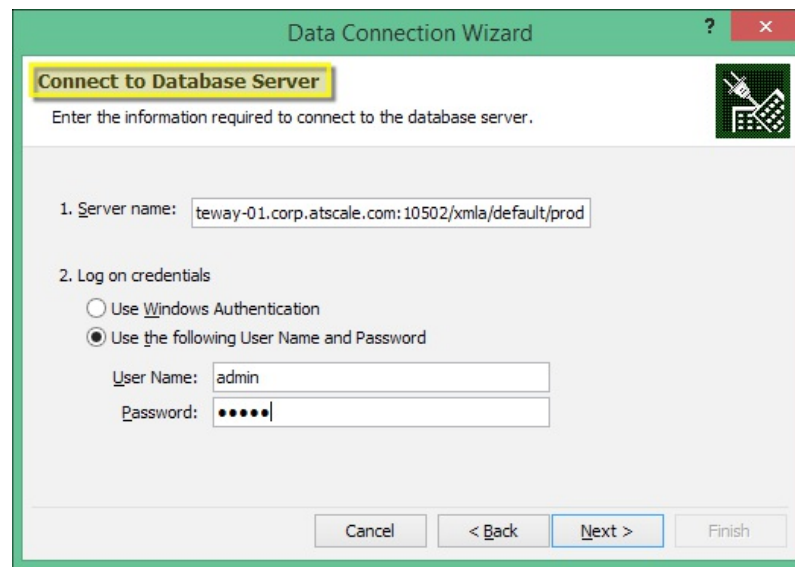
- ▶ Obtain the URL to the AtScale MDX query listener service. For details, see [Getting Cube Connection Information](#).
- ▶ If user accounts for AtScale are managed in Google's G Suite Directory, obtain a temporary session password:
 1. Log into AtScale by using your Google credentials.
 2. Click on your user profile icon and select **Profile**.
 3. On your user-account page, look for the heading **Temporary Session Password**. Copy the password to your system clipboard.
 4. Log into AtScale via your client BI application, using your Google account ID (Gmail address) for your user ID and the temporary session password.
- ▶ Configure the connection to AtScale using Windows Authentication (NTLM). For details, see [Connecting to AtScale Using Windows Authentication](#).
- ▶ In case the Active Directory used for authentication is configured to use channel binding, you need to configure the communication between AtScale and Active Directory. For details, see [Connecting to Active Directory that uses LDAP Channel Binding](#).
- ▶ Optionally, you can enable Xpress compression to improve the communication. To do this, you can turn on the `soap.xpress.enabled` engine setting. For more information, see [Changing Engine Settings](#).

Procedure

1. Open a blank Excel worksheet.
2. On the **Data** tab, select **From Other Sources > From Analysis Services**.

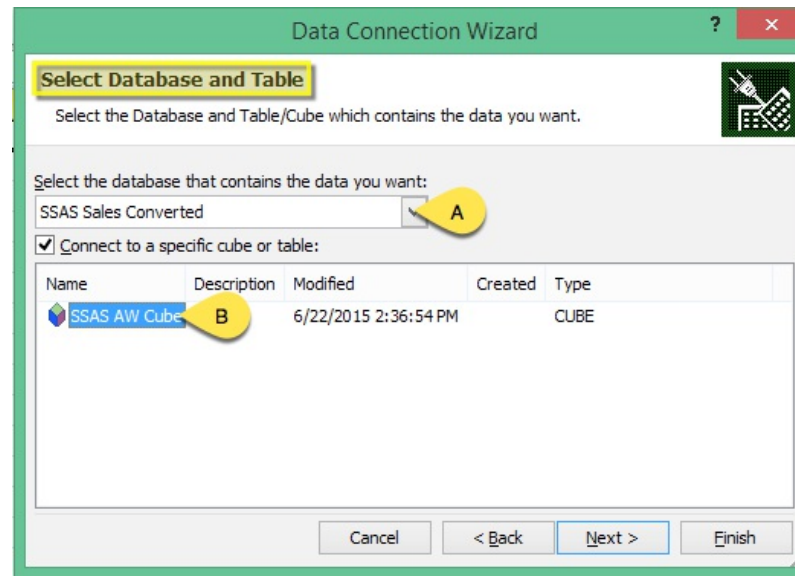


3. In the **Connect to Database Server** dialog, enter the connection information. Then, click **Next**. If `auth.ntlm.enabled` is set to true to enable Windows Authentication (NTLM), select **Use Windows Authentication** instead.



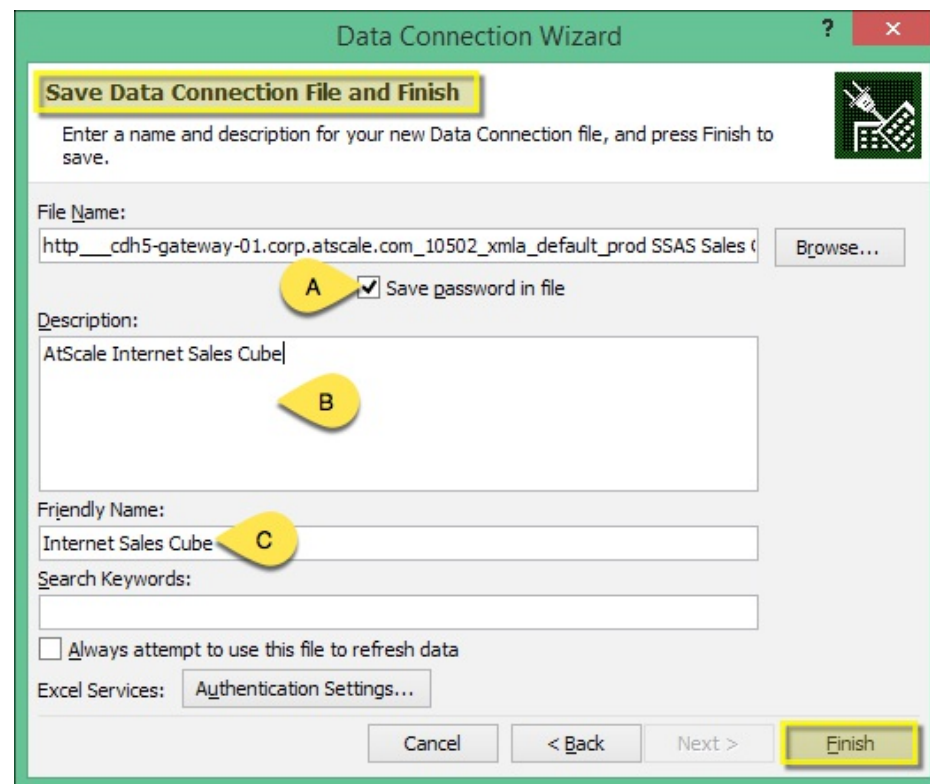
<p>Server name:</p>	<p>Enter the URL to the AtScale MDX query listener service. The URL is in the format of:</p> <p><code>http://atscale_host:10502/xmla/default</code></p> <p>The default AtScale engine port is 10502. The default AtScale organization name is default.</p>
<p>Login credentials:</p>	<p>If AtScale is configured to authenticate by using a Microsoft Active Directory server for authenticating Windows users, you can keep the default selection Use Windows Authentication.</p> <div data-bbox="1196 1867 2066 2079" style="border: 1px solid #0070C0; padding: 5px;"> <p>Important: Microsoft NT LAN Manager (NTLM) v2 is required for this method of authentication.</p> </div> <p>Otherwise, select Use the following User Name and Password and then enter your AtScale username and password. If user accounts for AtScale are managed in Google's G Suite Directory, authenticate by using your Google account ID (Gmail address) and the temporary session password.</p>

- In the **Select Database and Table** dialog, choose an AtScale project as the **database**, then choose an AtScale cube as the **table**. Click **Next**.

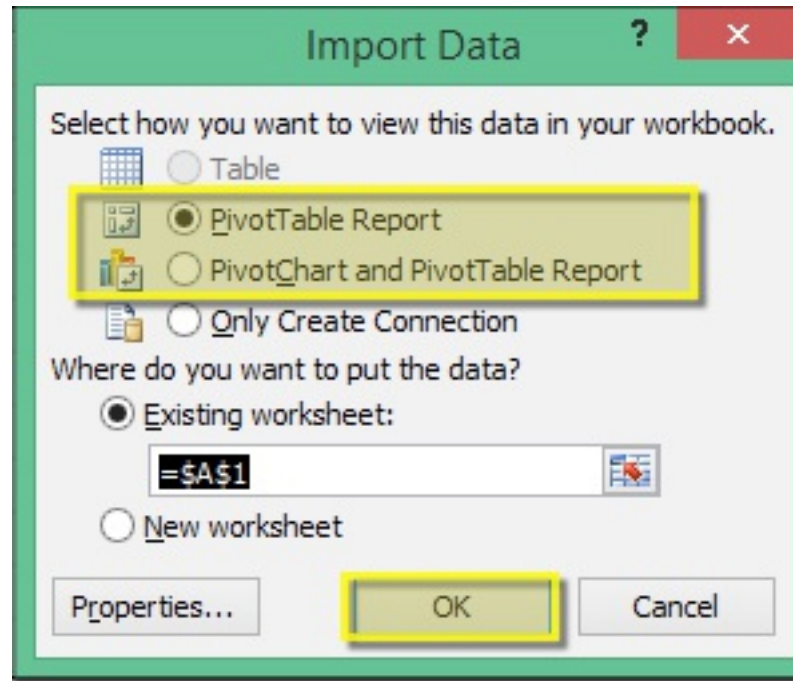


- In the **Save Data Connection File and Finish** dialog, select **Save password in file**. Optionally, you can enter a **Description** and **Friendly Name** for the AtScale cube you are connecting to. Click **Finish**.

Note: When connecting to **Excel 2010**, you must select **Save password in file** or you will be unable to establish a connection to your AtScale cube.



- In the **Import Data** dialog, choose **PivotTable Report** or **PivotChart and PivotTable Report**. Click **OK**.



What To Do Next

You can create your PivotTable report by choosing fields from the cube.

